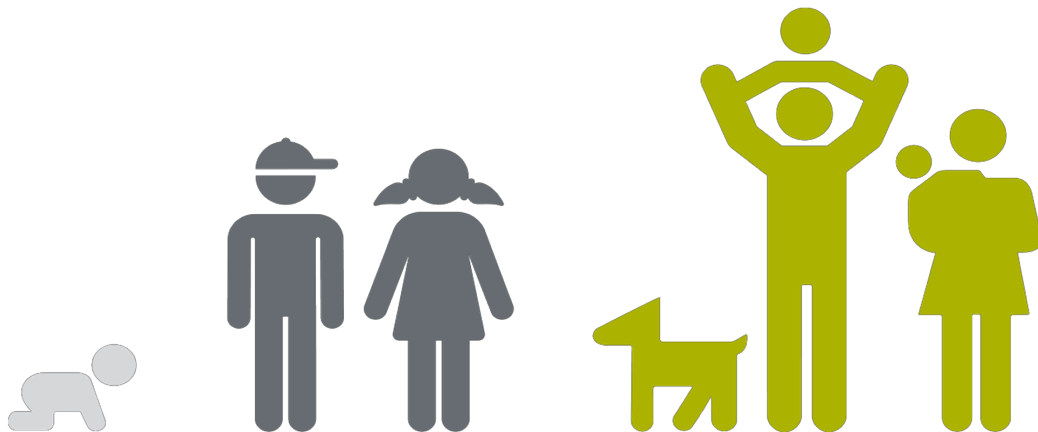


Cwm Taf Social Services And Well-Being Partnership Board

A Shared Regional Strategy For Supporting Children, Young People And Families



Content and Glossary

	Page
1. Introduction and Context	2
2. Vision Statement	3
3. Cwm Taf Area	4
4. Our population	4-5
5. A History of Partnership	6
6. Our Shared Vision	7
7. Some of the Challenges we face together	8
8. Our Shared Principles	9
9. Our three-Year Shared Objectives	9
10. Governance and Accountability	10
11. Performance and Delivery	10

1 Introduction and Context

Partners in Cwm Taf have built on a strong record of constructive working on support for children and young people across the region to develop a joint strategy, the purpose of which is to steer the development of children's health, wellbeing and social services for the next five years. It will help partners address the resource and capacity issues facing them, and new and emerging Welsh Government legislation and policy requirements.

Partners have all undertaken significant work in recent years to help shape different aspects of their children's services offer and this work has been heavily informed by recent changes and ongoing commitments.

The strategy document was developed by a multi-agency working group in 2017-18, guided by the Regional Partnership Board and supported by the Institute of Public Care at Oxford Brookes University (IPC). It involved detailed analysis of local partner priorities, workshops to explore challenges and agree priorities, and engagement with children and young people.

The document has been prepared in a way to minimise the complexity of the messages in it, be readable to members of the public, and to ensure that further work by partners is informed by a clear set of priorities and objectives. It sets out the 5-year shared priorities for the region and it will be supported by a set of realistic but challenging milestones. Subject to the addition of the Bridgend area to the regional partnership it will be revised to incorporate new or revised priorities.

The document sets out how we will work together to address Welsh Government legislation and how we will pool our resources to ensure high quality, accessible and integrated services that will help children, young people, families and communities quickly and effectively. It explains our shared vision, and how it will be implemented, overseen and measured to ensure it is implemented effectively.

The plan to support the strategy has also been produced jointly by partners in Cwm Taf in response to the population analysis, and consultation with the public and professionals in 2016 and 2017. It is intended to remain relevant until 2022. There is proposed a shared vision, principles and objectives which will direct the work of all partners over that period. It takes into account:

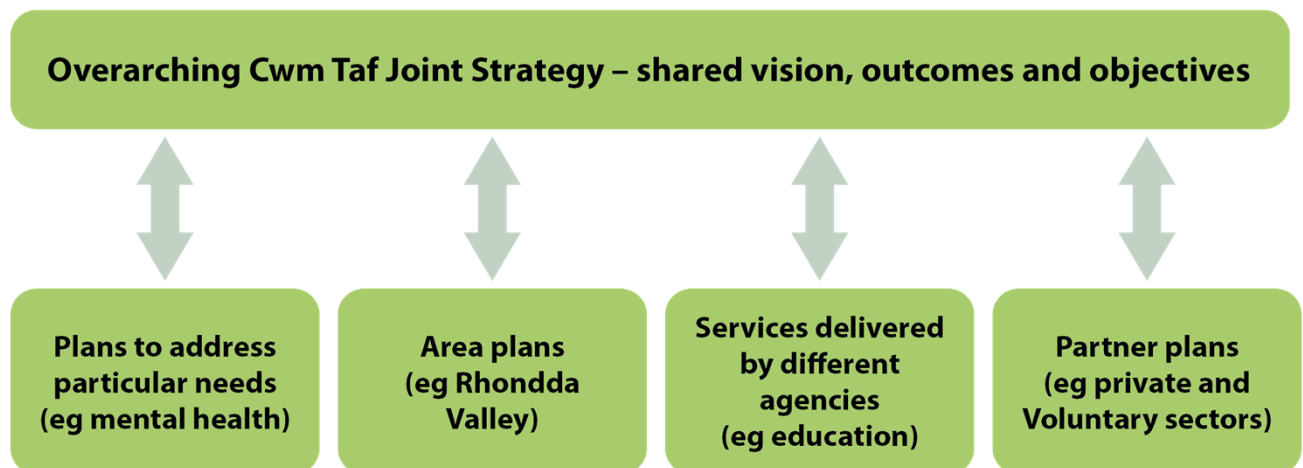
- The Social Services and Well-being (Wales) Act which gives people more of a say in the care and support they receive.
- Well-being of Future Generations (Wales) Act 2015. This Act is about improving the social, economic, environmental and cultural well-being of Wales.
- The Population Assessment which captures the needs and resources of the local population and how public resources can best be used to deployed support to them.
- The Well-being Assessment (WBFAG) which is expected to capture the strengths and assets of the people and communities in the area in their assessment.

- The commitment of the Cwm Taf Public Services Board on a range of strategic intentions across the region including delivering the goals of the Well-being of Future Generations (Wales) Act.
- Universal services that are those services (sometimes also referred to as mainstream services) that is provided to, or is routinely available to all children, young people and families.
- Early help to ensure working with children and families to help them deal with difficulties or challenges as soon as they arise.

2 Vision Statement

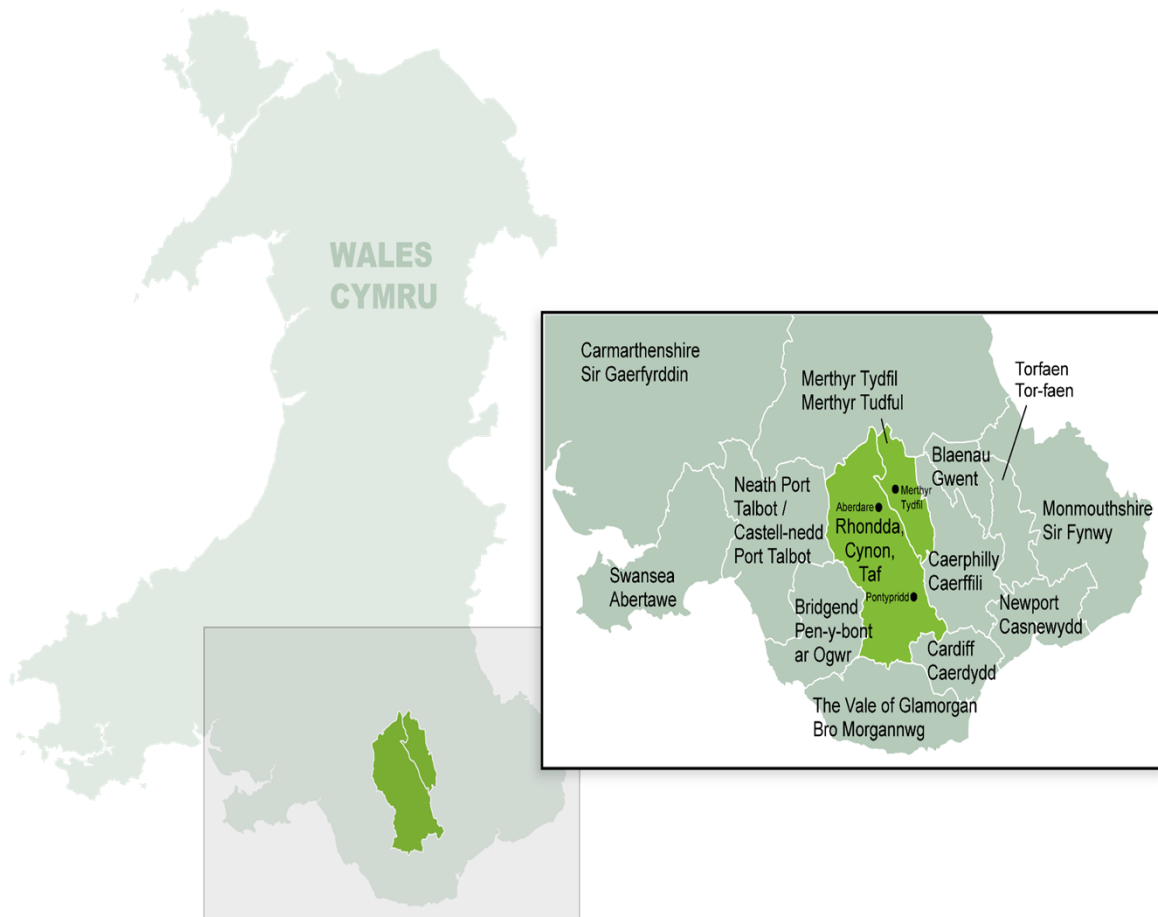
Our shared vision is that children, young people and families in Cwm Taf live safe, healthy and fulfilled lives and that they can achieve their full potential by building resilient communities.

The Cwm Taf Public Services Board will make sure that all our activities and services are driven by this Vision Statement.



3 Cwm Taf Area

The partnership is made-up of public and third sector organisations in the Cwm Taf region, and we are concerned with the wellbeing of all children, young people and their families in Cwm Taf.



4 Our population

Overall, we think that Cwm Taf is a great place to grow up, but children, young people and families do face challenges.



3.064 million people live in Wales. 10% of the Wales' population live in Cwm Taf.



For every **100** adults in Wales **47%** have suffered at least one adverse childhood experience (ACE) during their childhood and 14% have suffered 4 or more



2,625 children in need live in Cwm Taf and make up 13.5% of all children in need in Wales.
28.7% children aged 4 to 5 are overweight or obese in Cwm Taf, highest in Wales 26.2%
1 in 5 children report low life satisfaction in Wales.



2,615 children and young people are reported to have experienced mental ill-health in Cwm Taf and make up 13.5 % of all such children and young people in Wales



765 children and young people are looked After in Cwm Taf, which is 13.5 % of all those looked after in Wales.
555 children and young people are on the Child Protection Register in Cwm Taf and make up 18.5% of all such children in Wales.



56% of pupils in Merthyr and **62%** in RCT gained A* - C grade in GCSE
Care leavers leaving school with no qualifications was **38%** RCT and 29% Merthyr in 2016



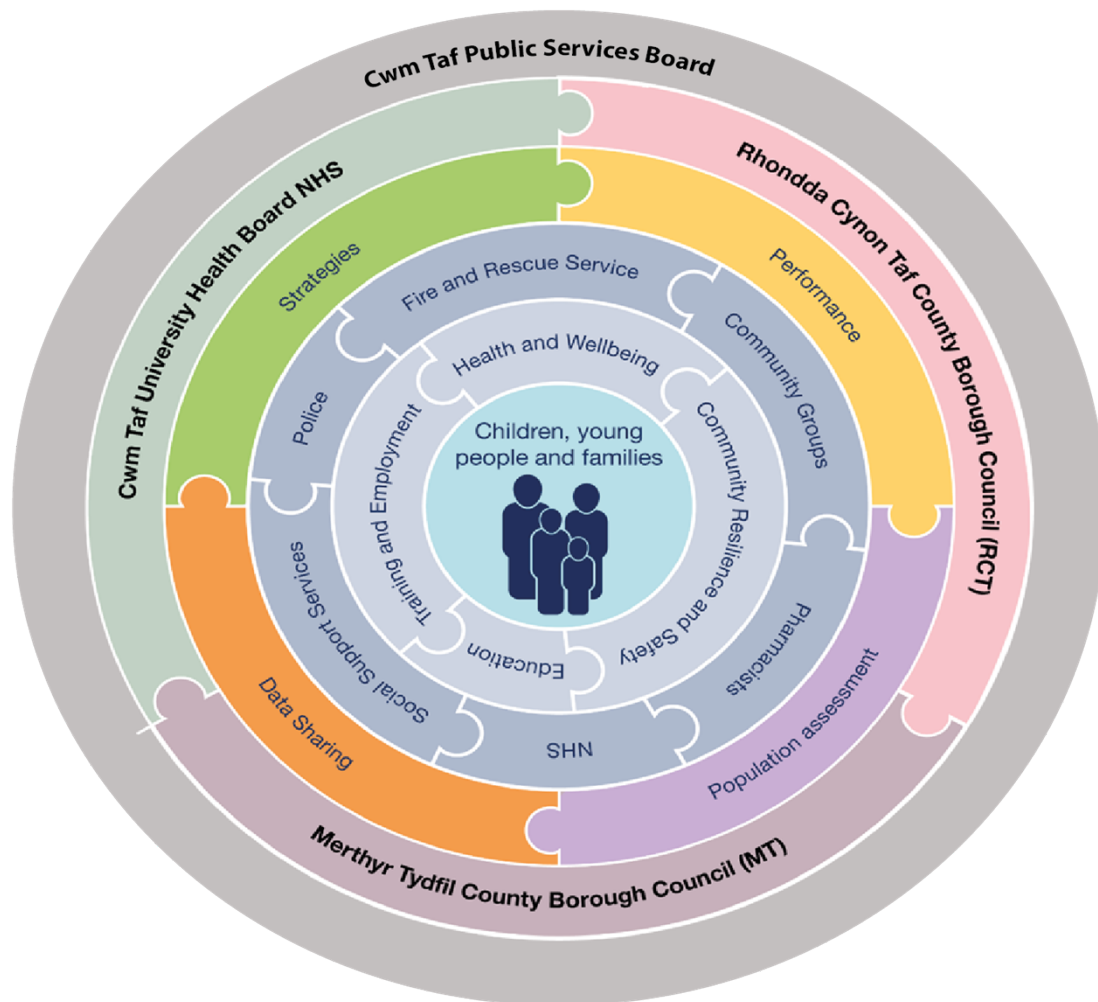
3,263 self-reported young carers aged under 25 years in Cwm Taf, an increase of **16%** since 2001.



483 households were assessed as homeless in Cwm Taf in 2016.
24% of children living households below average income in Cwm Taf in contrast to 22.2% in Wales.

5 A History of Partnership

In Cwm Taf we have a strong history of partnership working and this is evident on our collaborations:



These include:

- Cwm Taf Public Services Board
- Cwm Taf Safeguarding Board
- Cwm Taf Youth offending Service
- Cwm Taf Multi-agency Safeguarding Hub
- Vale, Valleys and Cardiff Adoption Collaborative
- Intensive Family Support Team
- Out of Hours Duty Service (MT, RCT and Bridgend)
- Joint Education and Psychology Service
- Cwm Taf Children and Young People's Emotional and Mental Health Partnership

6 Our Shared Vision

We have agreed a shared vision which recognises these challenges, and sets out how we will address them:

- Children, young people and families in Cwm Taf will live safe, healthy and fulfilled lives and achieve their full potential.
- Families and communities will be more resilient and independent.
- Our focus on communities will give children, young people and families the best possible environment to thrive.
- The balance of resource will shift from safeguarding, substitute and complex care to early and targeted help.

In summary:



7 Some of the challenges we face together

This is a challenging time for us all, as we work together to address issues including:



Significant changes in family and community structures



Increasing financial pressure on public services



Changing Populations including a higher proportion of older people



New technology changing the way we interact and communicate with each other



Changing public expectations about what is a good life and what services are needed to support them



Increasing complexity of need for some of our children and young people

8 Our shared principles

To address these issues and deliver on our vision over the next five years we will work as partners to deliver the Social Services and Well-being (Wales) Act 2014 and Well-being and Future Generations (Wales) Act 2015 and:

- Work better in partnership with local children, young people, families and communities to help them achieve their personal well-being outcomes and build resilience.
- Work positively with children, young people and families taking a strengths-based, co-production approach.
- Take a place-based approach to working collaboratively in and with communities to develop the best possible environment for them to thrive
- Focus our intensive support on those children and young people who need help to deal with significant adverse experiences.

9 Our three-year shared objectives

In the next three years each partner will use our shared vision and principles as the basis for their own detailed plans and services. In addition, we will work together to secure the following twelve objectives:

1. We will work to achieve an integrated place-based approach to building resilient communities that prevents and mitigates the effects of adverse childhood experiences (ACEs).
2. We will invest in and collaborate with our local communities to support children, young people and families' learning, resilience, and wellbeing.
3. We will co-produce shared plans for the development and organisation of early help interventions in localities, underpinned by information sharing, joint-working arrangements and the active involvement of children, young people and families in their co-production.
4. We will enhance partner's joint arrangements for safeguarding, risk assessment and information sharing, ensuring that they are successful in protecting children, young people and vulnerable adults in communities.
5. We will have a full range of integrated services for children, young people and families with complex needs to provide care and support at the right time and place.
6. We will implement a shared framework for the assessment, eligibility and support for children, young people and families, to ensure we are collaborating effectively across professions and agencies.

7. We will have effective shared information arrangements in place between all key agencies across Cwm Taf.
8. We will have a shared performance framework reflecting our continuum of services, which meets the requirements of the Welsh Government and allows us to review the impact of our services on wellbeing outcomes for children, young people and families.
9. All of our local plans will be informed by a single population assessment for Cwm Taf, which will be kept under review.
10. We will have a workforce across Cwm Taf which is working effectively with children, young people and families in the spirit of the SSWB (W) Act.

10 Governance and accountability

The strategy is owned by the Cwm Taf Regional Partnership Board, which will hold partners to account for its delivery and ensure that local plans are developed within these overall priorities.

The Regional Partnership Board will review targets and performance measures (including relevant National and Regional Performance Indicators) to ensure that the strategy is having its intended impact.

Every partner agency will seek agreement from the Partnership Board for any key local plans related to the strategy.

11 Performance and delivery

The Partnership Board will review the impact of the shared strategy through a twice-annual review, and an annual report to the Welsh Government covering:

Population outcomes, needs and services from the data collected for the Government such as education returns, health performance and social care outcomes.

Service activity and performance from the same sources and our locally collected data.

Progress against milestones identified in the delivery plan for the five-year priorities and three-year objectives in this strategy.